



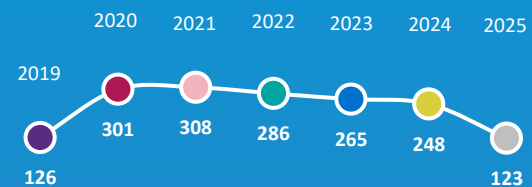
2025 Medical Training Survey

The Royal Australian and New Zealand College of Radiologists

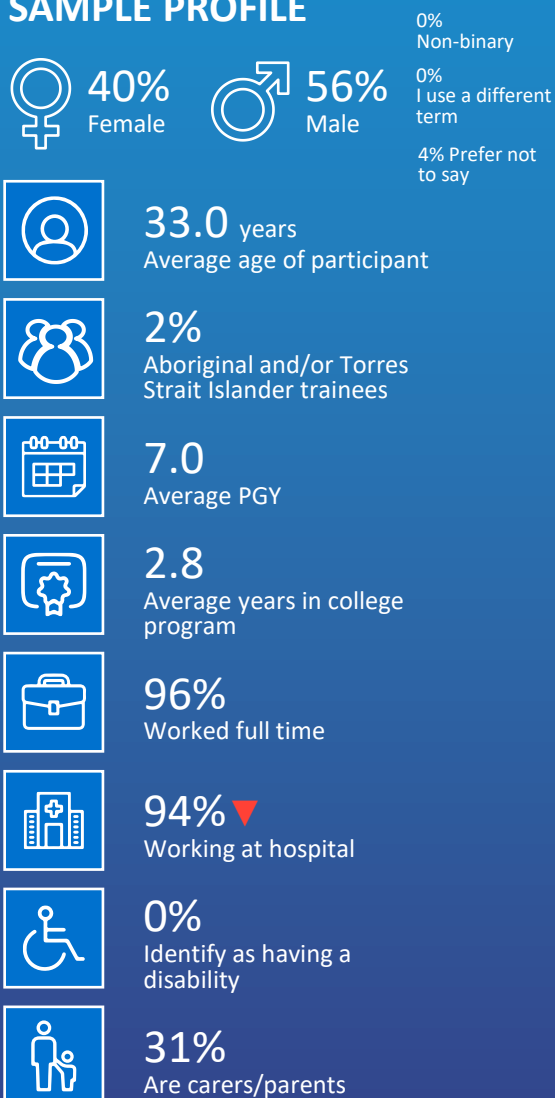
INTRODUCTION

The Medical Board of Australia's Medical Training Survey (MTS) is a national, profession-wide survey of doctors in training in Australia. This infographic is for the Royal Australian and New Zealand College of Radiologists for which 123 trainees responded to the survey. It is confidential and generates data used to strengthen medical training in Australia. The MTS is conducted annually with doctors in training, with 2025 being the seventh year.

NUMBER OF RANZCR TRAINEES WHO PARTICIPATED

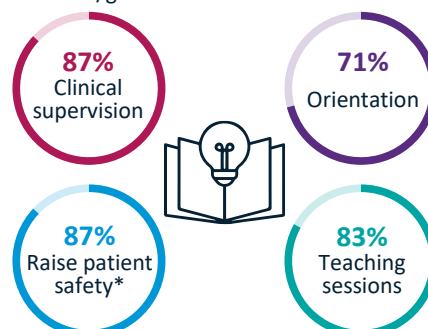


SAMPLE PROFILE



QUALITY OF TRAINING

% excellent/good



*Excludes those who reported that they did not receive this training

RECOMMEND TRAINING

86% Strongly agree/agree they would recommend their current training position to other doctors

76% OF TRAINEES
HAVE RECEIVED TRAINING ON HOW TO PROVIDE CULTURALLY SAFE CARE

49% OF TRAINEES
HAD A HEAVY / VERY HEAVY WORKLOAD IN SETTING

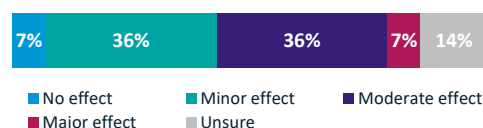


8% OF TRAINEES
HAD ACCESSED FLEXIBLE WORK ARRANGEMENTS

64% Strongly agree/agree that their college supports flexible training arrangements

1 IN 5 TRAINEES
EXPERIENCED AND/OR WITNESSED BULLYING, HARASSMENT, SEXUAL HARASSMENT, DISCRIMINATION AND/OR RACISM

EFFECT OF EXPERIENCING BULLYING, HARASSMENT, SEXUAL HARASSMENT, DISCRIMINATION AND/OR RACISM ON MEDICAL TRAINING



43%
Reported the incident they experienced

40%
Reported the incident they witnessed

ASSESSMENT

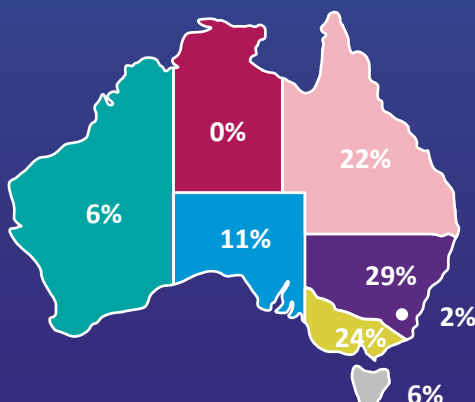
% total strongly agree/agree

72%
The exam(s) ran smoothly on the day

69%
The exam(s) were conducted fairly

32%
They received useful feedback about their performance in the exam(s)

30%
The feedback was timely



The above map shows the current term/rotation or placement % by state.

Visit MedicalTrainingSurvey.gov.au and use the interactive data dashboard to create your own tailored reports using MTS data from 2019 to 2025.

© Copyright Ahpra on behalf of the Medical Board of Australia

▲ ▼ Significant difference between the results of 2024 and 2025